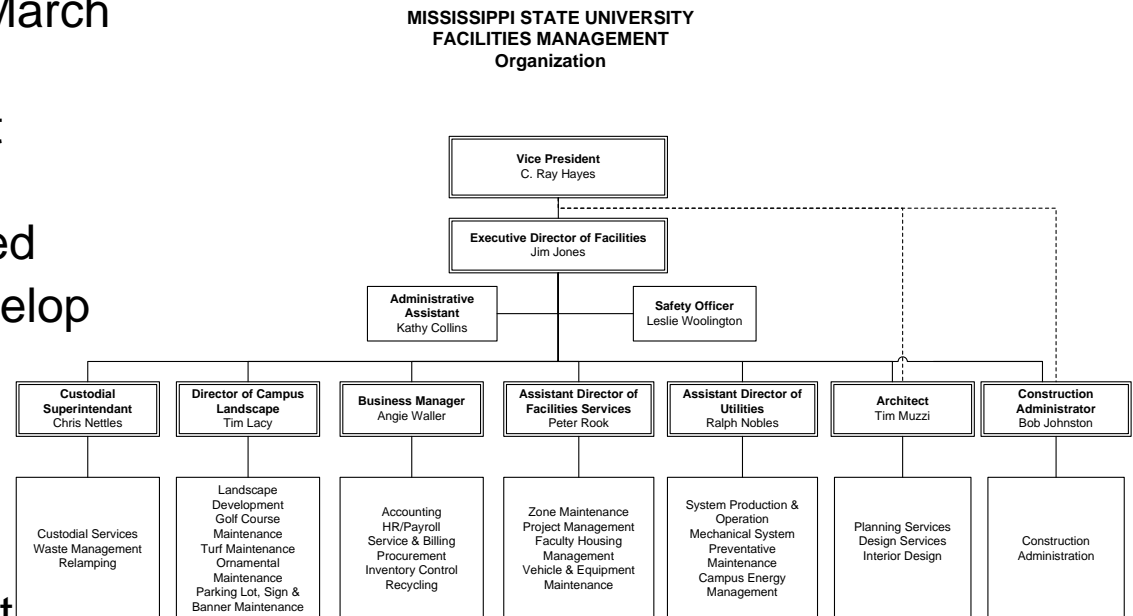


# Facilities Management Background

- 3 Separate Departments
  - Physical Plant
  - Custodial Services
  - Campus landscape
- External Facilities Review (March 2003)
  - 31 specific improvement recommendations
- Jan of 2004, XD position filled
  - Goals & Priorities to develop Commonalties
- FM Process
  - Business management
  - Logistics Management
  - Operations Management



# MSU Priorities 2005 to 2010

- Expand student enrollment to 20,000
- Increase research capacity, industrial and business outreach, and technology commercialization
- Transform campus infrastructure to improve operations and reflect institutional status
- Improve assessment and accountability
- Move MSU to top tier among national universities in reputation and visibility



# Facilities Management Priorities for 2005

- Develop an Effective Performance Driven Facilities Management Team
- Enhance Pride and Professionalism of the MSU Facilities Management Workforce
- Remove Redundancies in MSU Facilities Management and Operation Through Organization and Process Improvements
  - Business Management
  - Operations Management
  - Logistical Support Management
- Improve the Services Provided to our Customer ... MSU
- Become the Facilities Management Provider of Choice for all of MSU
- Become the Model for Facilities Operations
- Consistency in Applying MSU Rules



# Related MSU Goals

## FY 2006 - 2011

- Develop a comprehensive and Sustainable Facilities Planning and Management System that supports MSU as an attractive and well maintained Campus
- Enhance Student housing and facilities supporting Campus life
- Develop a customer focused system for providing services for core functions
- Create an efficient pedestrian campus that emphasizes walking and biking
- Enhance Athletic Facilities
- Continue to enhance and expand MSU infrastructure
- Continue to review and improve programs that promote and protect health and safety



# Facilities Management Goals for 2006

- Redirect the focus of our **resources**
- Refocus our attention to our **customers**
- Continue to develop the **most efficient organization** (MEO)
- Continue to enhance **pride and professionalism**
- Enhance **the greater MSU** thru our own actions

